



“ Only **21%** of the Talent pool in the country is employable ! We propose to make the other **79%** Job Ready... ”

Subscribe for GOLD



**HireMee**  
Discover Your Diamond  
[www.hiremee.co.in](http://www.hiremee.co.in)

# GOLD Features

## Diagnostic Assessment

We meticulously assess the aspirants' skills in seven different areas that recruiters actually look for.



## Diagnostic Reports

Aspirants get a detailed analytical insight into their performance in the assessments and a report on how close they are to getting a dream job.



## Learning Tracks

Curated learning roadmaps enhance the aspirants' employability with the right content, regular assessment, detailed solutions and insightful reports.

# HireMee GOLD

Employability Enhancement Program

## Jobinars

Industry experts mentor the aspirants step-by-step through webinars and podcasts to help them achieve.



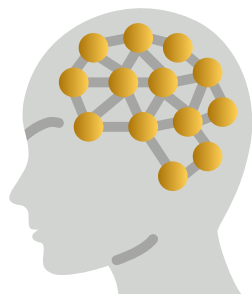
## Digital Profile

Aspirants create their own digital identity including Video Resume & Final Score to ensure prompt recruitment.



## Recruitment Calendar

As **GOLD** members, the aspirants get specific Monthly Recruitment Calendars and reference to 2300+ companies looking to recruit for the profile



1 Aspirants get sectional & full assessments to gauge their skill levels.

They get to know how close they are to getting their dream jobs.

2

3 They get tips and tricks to ace all screening – the online test, the GD, the coding round, & the PI.

They learn efficiently from the most relevant learning material.

4

5 They get to test their skill levels through multiple assessments & improve by learning from the detailed solutions.

They get to practice solving programming questions in real time simulations.

6

7 They create their digital identity.

They have an itinerary with our Monthly Recruitment Calendars, in place of the unplanned, random searching.

8

9 They get regular alerts & updates about recruitment drives.

# Few of our CORPORATE clients



# HireMee ASSESSMENT partners



Rani Channamma University, Karnataka

JC Bose University Faridabad

IFTM University

Tamilnadu Skill Development Corporation

MGR University Chennai

St Anne's college for women Hyderabad

Parul University Gujarat



RC College Bangalore

KIET Group of Institutions, Ghaziabad

Telangana Academy for skill and Knowledge

Cooperative Academy of Professional Education

Rama University

JIMS

Periyar University



VTU, Karnataka

Devi Ahilya Vishwavidyalaya, MP

Kalinga University Chhattisgarh

Osmania University Telangana

HNB, Gharwal University, Uttarakhand

Central University Ajmer, Rajasthan



**Karpaga Assessment App Matrix Services Pvt. Ltd.**

4th Floor NO 483, Seetha Complex, 16th Cross,  
8th Main Road, Ideal Homes Co-Operative Building  
Society Ltd Layout, Rajarajeshwari Nagar,  
Bengaluru, Karnataka 560098.

Phone : +91-8792922796

Email : [info@hiremee.co.in](mailto:info@hiremee.co.in)

[/company/hire-mee](#)

[/Hiremeeinc](#)

[/hiremeeinc](#)

[/hiremeeinc](#)

[www.hiremee.co.in](http://www.hiremee.co.in)